



KEY FEATURES

- 2" compression driver
- Customized CD horn with 55x45 degree dispersion
- Modular crossover
- Highly durable Safecoat coating
- "Slingshot" flying system
- Speakon® NL4 with link

DESCRIPTION

The M14T is designed as a dedicated top-box and is an ultra compact, loud and lightweight speaker designed for high quality live sound reinforcement or as a front-fill or delay for a Slingshot FOH system. It features a high output 15" mid-bass unit with excellent output and clarity in the midrange as well as a 2" compression driver with a 3" diaphragm. The mid-bass unit has a 3" voice coil with windings on the inside and outside of the voice coil former. As a result, the unit has a very balanced mass with excellent clarity and stability when driven hard. The compression driver features a titanium diaphragm with a polymer fibre surround on a Kapton former, which enables the frequency response to extend to 20kHz with very low distortion. Power compression is kept low by the use of a flat wire copper voice coil. Weighing in at only 32 kg, the M14T is an easy one man lift designed to be used with the M118T or the M218T subwoofer.

SPECIFICATIONS

Passive mode:

Power rating IEC268:	450 watt
Power rating peak:	1800 watt
Sensitivity 1w/1m:	102 dB
Max SPL, calc. long term:	129 dB
Max SPL, peak:	135 dB
Frequency range +/-3dB:	65Hz-20kHz
LF:	15"
HF:	2"
Dispersion:	55x45 degrees
Flying system:	Flying tracks accept double stud

Drive units:

<u>Woofer:</u>	15" with 3" voice coil
Nominal impedance:	8 ohm
Powerhandling AES:	400 watt
Sensitivity 1w/1m:	102 dB
Max SPL, calc. long term:	129 dB
Max SPL, peak:	135 dB
Recommended amplifier:	650 watt

Compression driver:

	3" diaphragm, 2" throat
Nominal impedance:	16ohm
Power handling AES:	150 watt
Sensitivity 1w/1m:	110 dB
Max SPL, calc. long term:	132 dB
Max SPL, peak:	138 dB
Recommended amplifier:	200 watt

Weight & Measurements:

Dimensions (HxWxD):	670x450x400mm (8.6x17.7x18.7 inches)
Net weight:	32 kg (70.4 lbs)
Finish:	Black Safecoat coating
Input connectors:	2 x Speakon® NL4
Top-hat adapter:	35mm

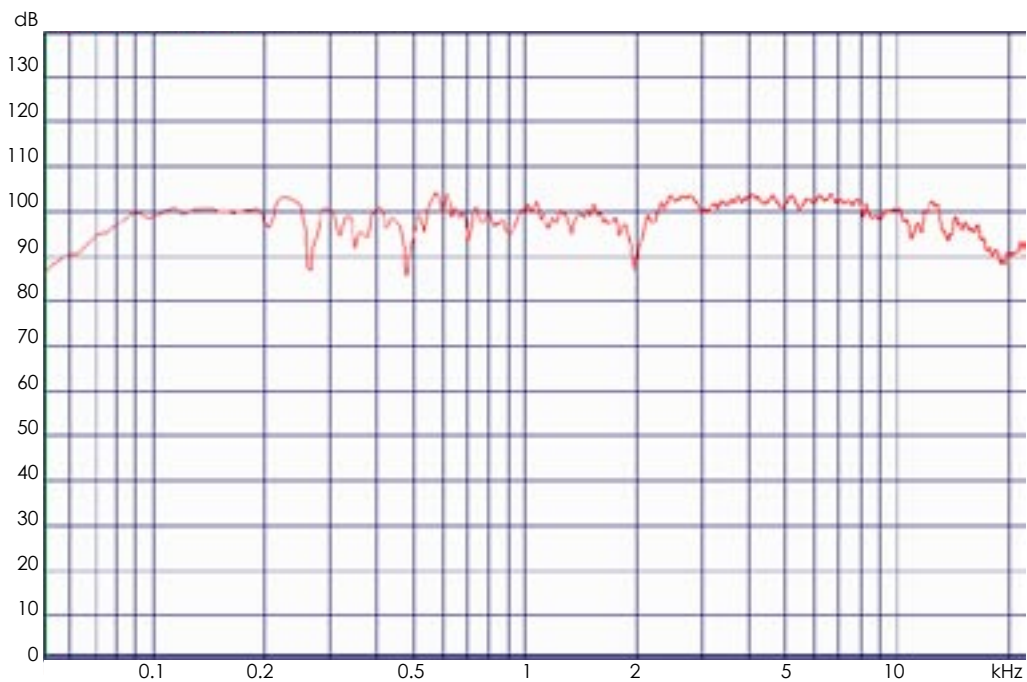
ARCHITECTURAL SPECIFICATIONS

The loudspeaker system shall be a two-way, reflex-tuned, full-range box with an IEC268 power handling of 450 watt and a frequency response from 65Hz-20kHz with a crossover point at 1.4 kHz and a 55x45 degree dispersion pattern. The loudspeaker system shall have a sensitivity of 102 dB and a maximum continuous output of 135 dB. The loudspeaker shall also have a built-in, modular, switchable passive crossover with double protection circuit. The loudspeaker system shall have one 15" woofer and one 2" compression driver with a titanium diaphragm with Mylar suspension. The woofer shall have an 8ohm load. The compression driver shall have a 16ohm load. The loudspeaker shall also have a three-point flying system, each with a documented load of 2145 kg. The cabinet shall be protected with the SafeCoat surface, constructed of 18mm Finnish plywood, trapezoidal in shape with a 15 degree angle and be 670mm (8.6in) high, 450mm (17.7in) wide and 400mm (18.7in) deep with a weight of 32kg (70.4 lbs). The loudspeaker system shall be the Mach M14T.

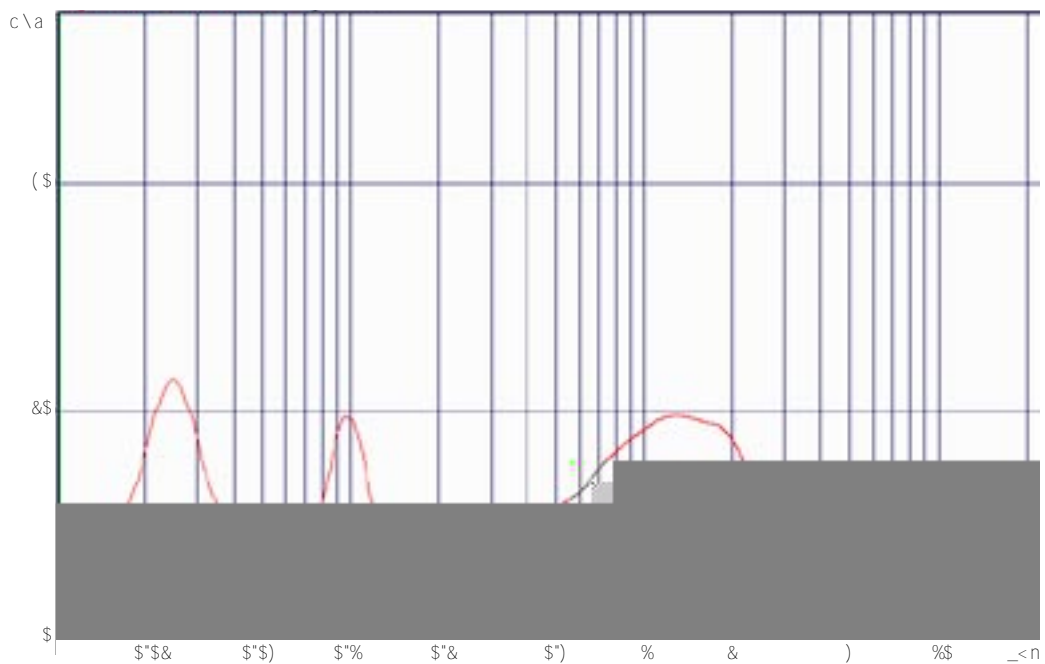
NOTE: Mach is continually working on research and production improvements, which can be introduced into existing products without notice. The products will always equal or exceed the original design specifications unless otherwise stated.

M14T

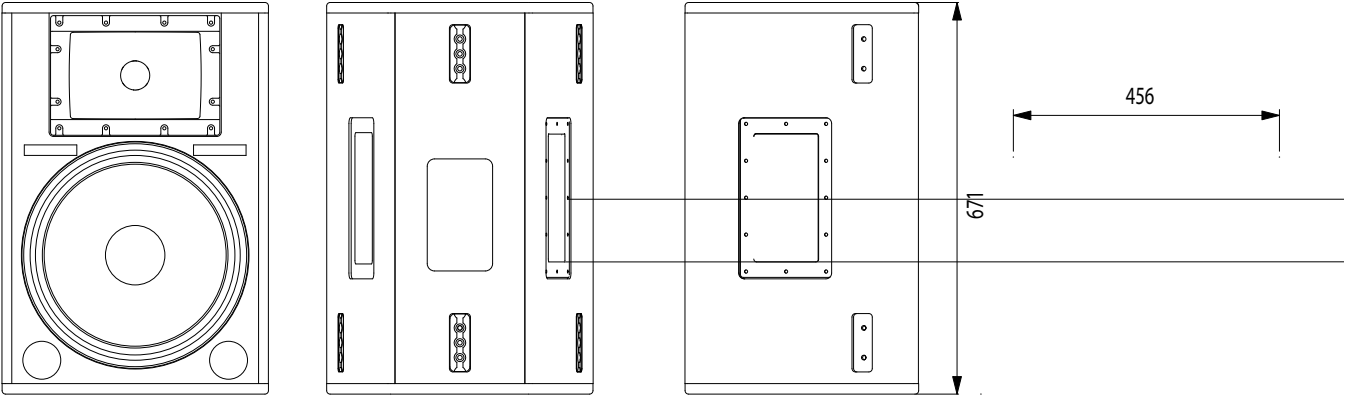
Frequency Response



Impedance Response



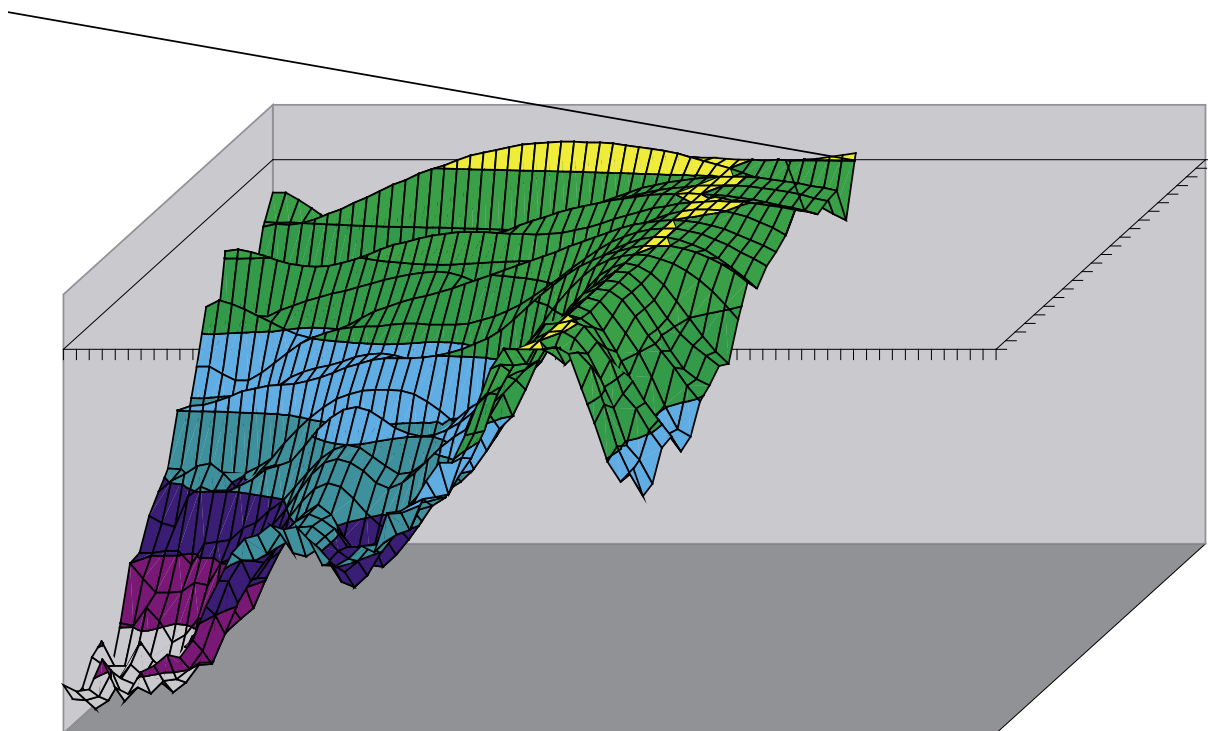
Size and Shape



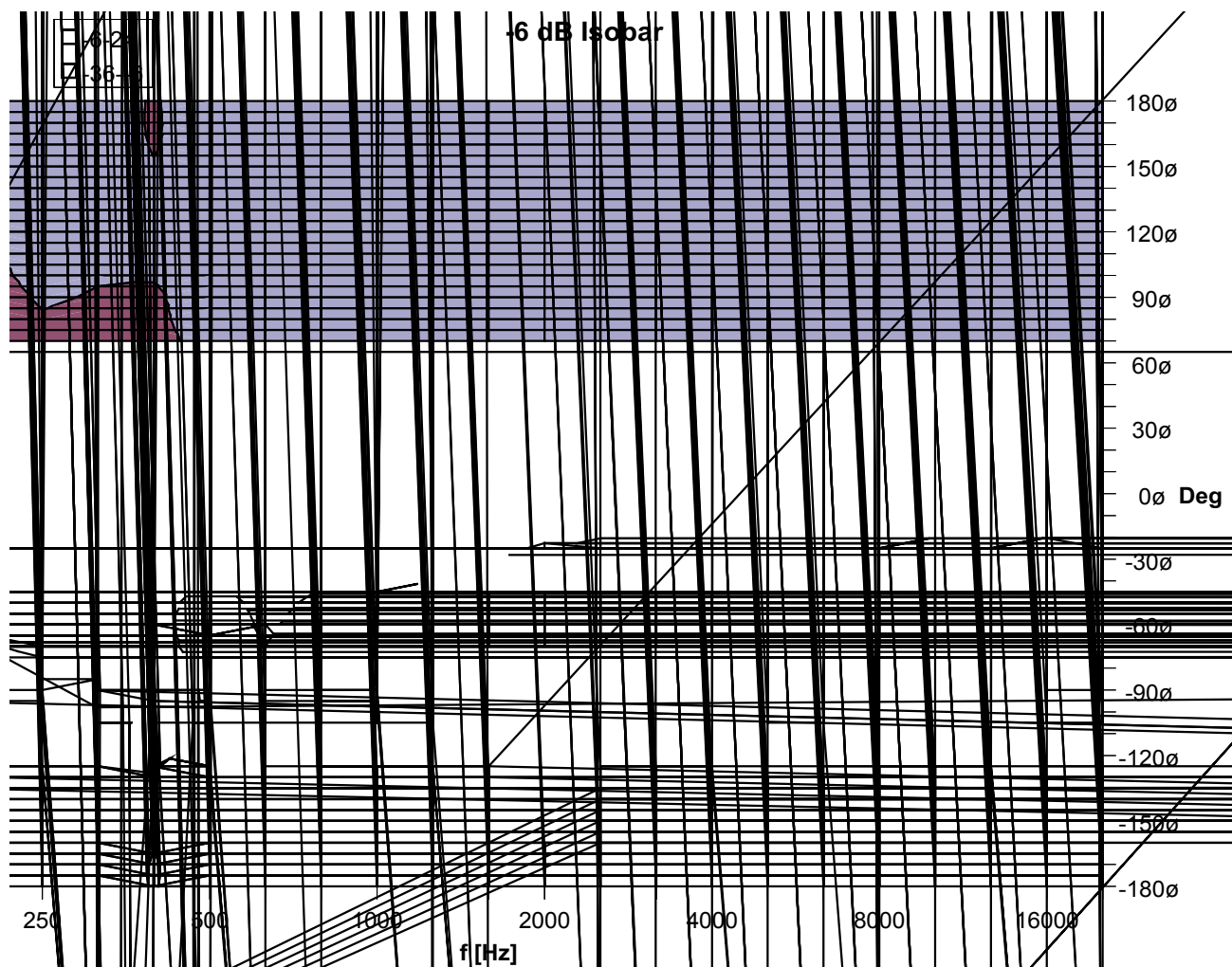
Mach

M14T

3D Directivity Plot Horizontal

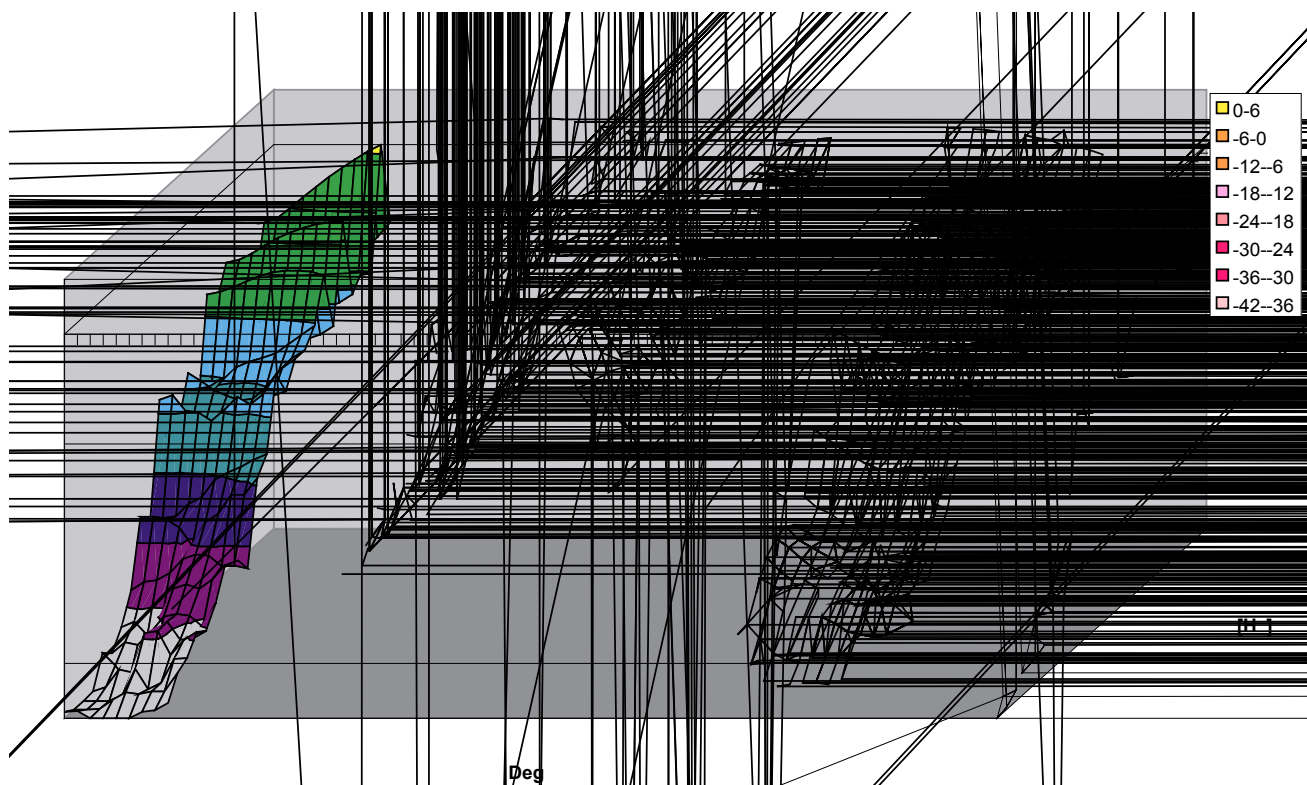


-6 dB Isobar Horizontal

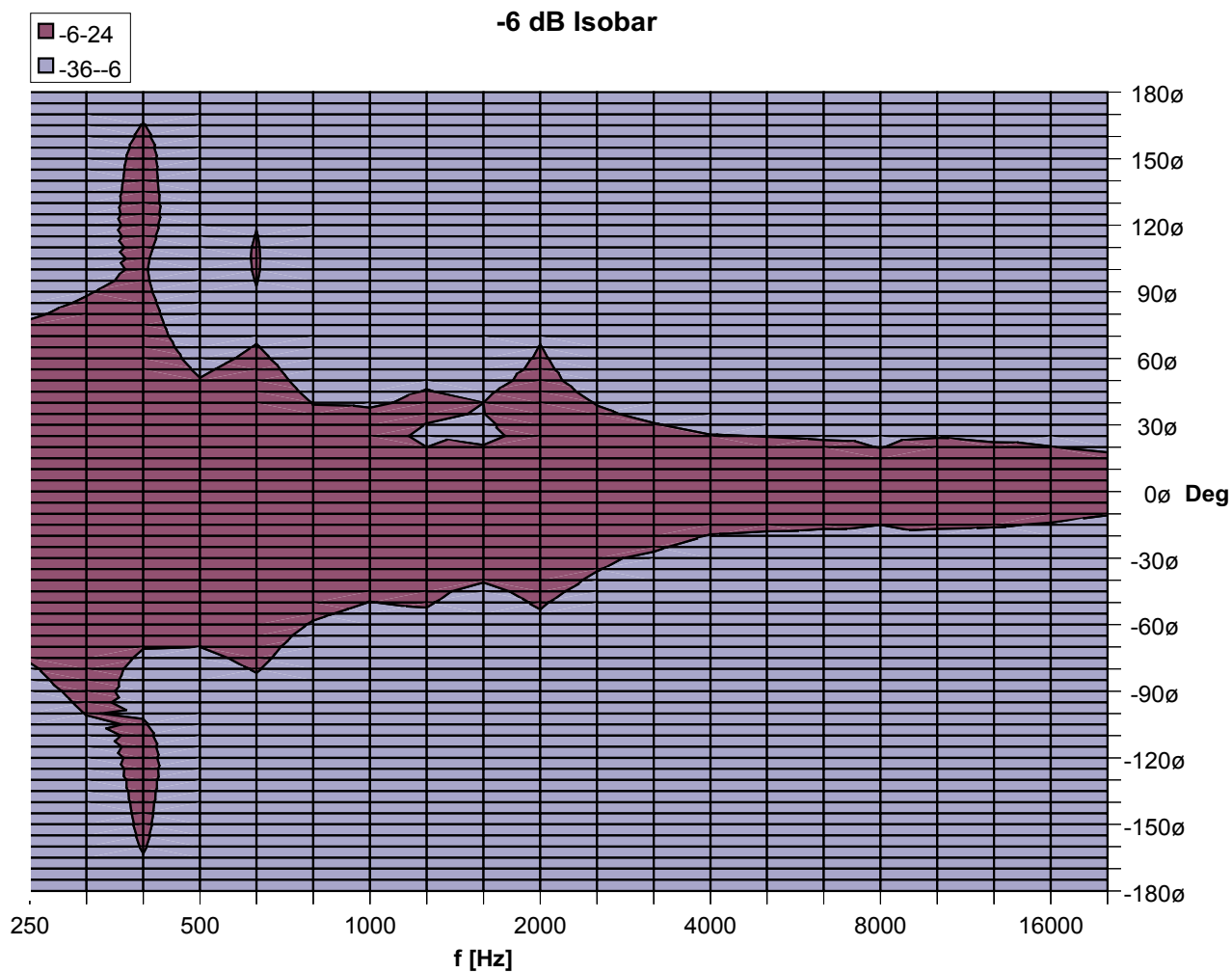


M14T

3D Directivity Plot Vertical



-6 dB Isobar Vertical



Mach